



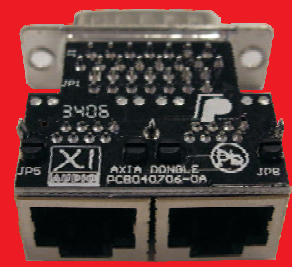
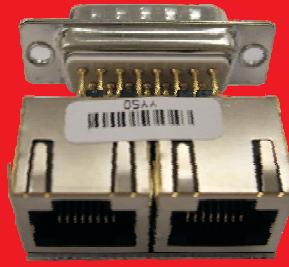
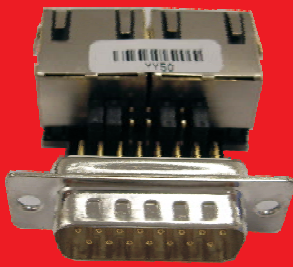
Axia DB15 to two RJ45 socket dongle for GPIO ports

Model: AX-DB15-2xRJ45

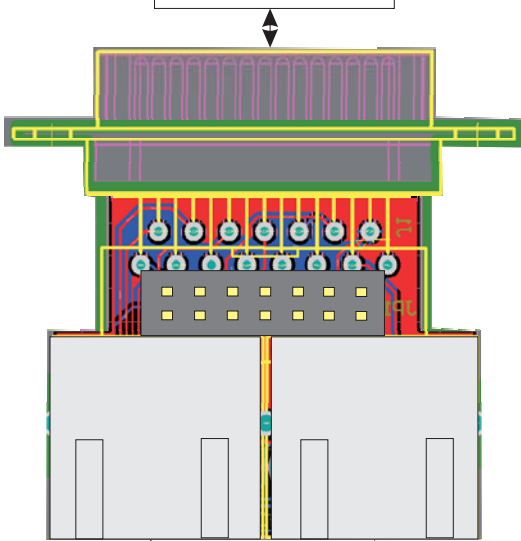
PN: AS-2000-0001

designed for AXIA

The GPIO dongle is especially designed for interfacing of GPIO in Axia digital studio system. It provides solder-less connectivity between GPIO ports and peripheral devices by using standard CAT5/6 patch cables (RJ45 plugs). Axia GPIO interface is provided on DB15 connectors. The dongle simply plugs directly in to the port on the Element PSU box or on stand alone GPIO node. The jumpers provide easy mapping of the GPIO signals for the various applications.



DB15 Plugs to
Axia GPIO port



Signaling
Inputs
(Switches)

Signaling
Outputs
(LEDs)

Pin Function

- 1 SW 1
- 2 SW 2
- 3 SW 3
- 4 GND SW
- 5 SW 4
- 6 SW 5
- 7 SW Common
- 8 +5 V DC

Pin Function

- 1 LED 1
- 2 LED 2
- 3 LED 3
- 4 GND LED
- 5 LED 4
- 6 LED 5
- 7 LED Common
- 8 +5 V DC

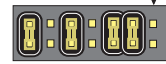
Jumpers Configuration

PIN 1



HP304 Host Panel

PIN 1



"Red Light" Board

PIN 1



The general application: common ANODE LED and Common GND Switches

CAUTION the dongle provides +5V to the external equipment. Be careful when you connect it, the damage of remote equipment or of Axia equipment could occur.

- A - 1
- B - 2
- C - 3
- D - 4
- ON AIR - 5

